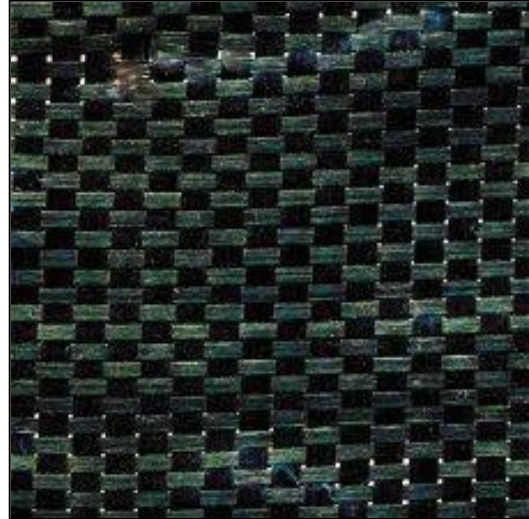


TENAX

Silt Fence

Woven Erosion Fence with Attached Hardwood Stakes



AVAILABLE ROLL DIMENSIONS AND WEIGHT

ENGLISH		METRIC	
Dimensions	Weight	Dimensions	Weight
2' x 100'	17.0 lb	0.610m x 30.500m	7.7 kg
3' x 100'	22.5 lb	0.915m x 30.500m	10.2 kg

PHYSICAL CHARACTERISTICS

NOTES

POLYMER TYPE	Polypropylene			
STRUCTURE	Woven			
COLOR	Black			
PACKAGING	Rolls with Wooden Stakes			
WOODEN STAKES	1" x 1" x 36" or 1" x 1" x 42"			
# STAKERS PER 100 ft	Typically 11, may vary upon request			
# STAPLES PER STAKE	Minimum of 4, typically 5			

TECHNICAL CHARACTERISTICS

ENGLISH

METRIC

NOTES

	UNIT		UNIT		
MD TENSILE STRENGTH	lbs / ft	20	kN/m	0.3	a, c
TD TENSILE STRENGTH	lbs / ft	20	kN/m	0.3	b, c
MD TRAP TEAR	lbs	17	kN	0.075	a, c
TD TRAP TEAR	lbs	14	kN	0.062	b, c
MULLEN BURST	psi	120	Kpa	827	c
PUNCTURE	lbs	30	kN	0.438	c
UV RESISTANCE @ 500 hr	%	70 retained	%	70 retained	c
MASS PER UNIT AREA	oz/yd ²	1.5	g/m ²	51	c
AOS	US Sieve	14	mm	1.4	c
PERMITTIVITY	sec-1	0.15	sec-1	0.15	c
WATER FLOW RATE	gal/min /ft ²	20	lpm/m ²	815	c

NOTES:

- a Longitudinal direction
- b Transversal direction
- c All dimensions and properties are reported as typical values.

TENAX

4800 East Monument Street
Baltimore, MD 21205
(P) 1-800-356-8495
www.tenaxus.com